



Fun with Seesaw

Seesaw is a digital portfolio app and website that allows students to share their thinking and make it visible to others. Seesaw allows students to publish their work to an authentic audience. Seesaw is a great tool for student reflection and extremely easy to use!

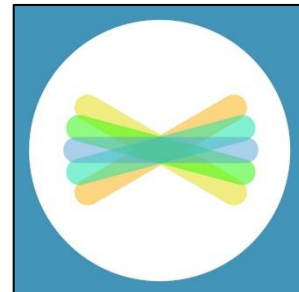
Seesaw allows students to demonstrate their learning in a way that works best for them! This could be through a photo, drawing, video, or file upload. All work must be submitted for approval by a teacher prior to it being displayed on the class feed. Students and families can also comment on each other's work. This can be a great way for students to practice giving critiques and feedback to one another. Just like activity approval, comments must be approved as well, even if they are from a connected family member!

Seesaw can be used on laptops, Chromebooks, iOS products, and android products.

Getting Started

If you are using a laptop or Chromebook, go to <https://web.seesaw.me/>

If you are using an iPad or tablet, you can download the Seesaw app from the app store.



If you have never used Seesaw before, you need to create a teacher account. Once you are on the Website, click "I'm a Teacher"

You can create an account from scratch, or you can scroll down and click "Teacher Sign Up with Google."

*We recommend signing up with Google if your school uses Google for Education.

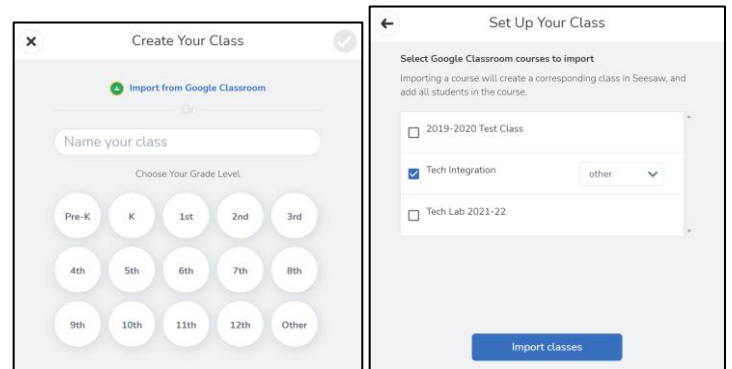
OR





Next, you will create your class. You can import your Google Classroom(s), or you can create a class from scratch!

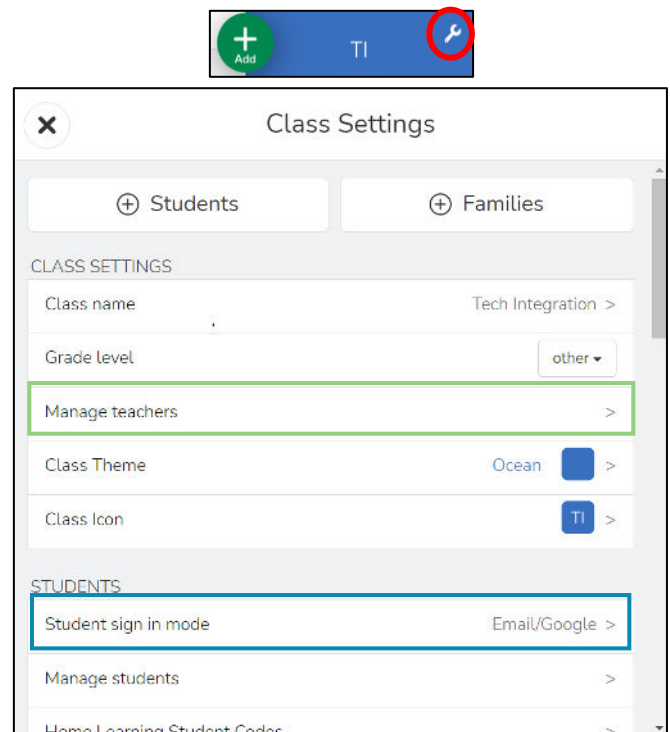
*We recommend importing from Google Classroom if your school uses Google for Education. It will allow students to click “Sign in with Google” instead of typing in login information!



Once your account is created, there are a few settings to check!

First, you can add any co-teachers you might want in the settings section. The settings can be found by clicking on the wrench tool in the upper right corner. Co-teachers have all the same rights as the account owner. They can create, delete, and approve any content. (This is shown in the green box.)

Next, make sure the student sign in mode is set to Email/Google. You can find this by clicking the wrench tool in the upper right corner. (This is shown in the blue box.)

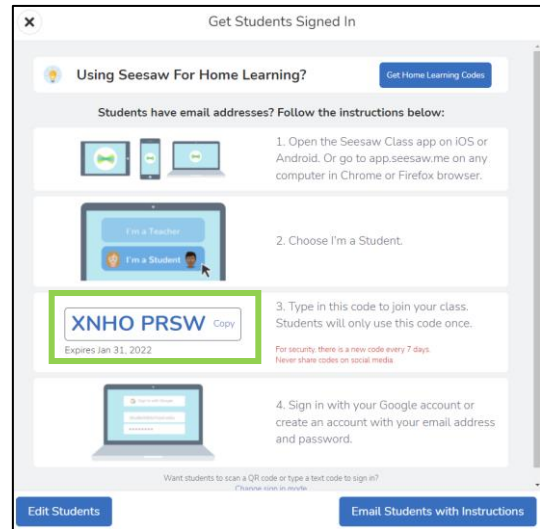
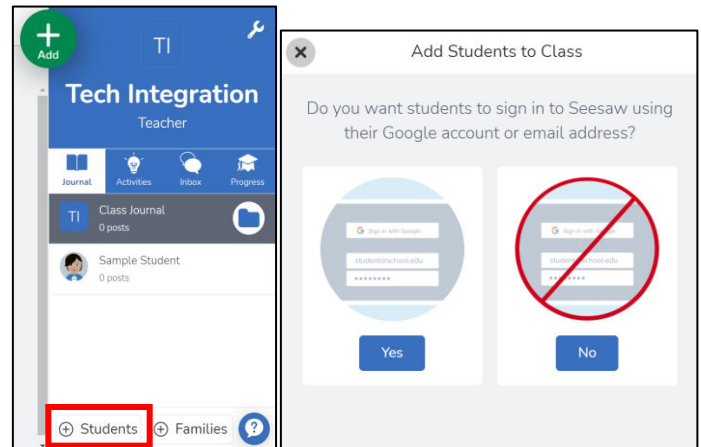




Now, you are ready to get your students logged in! You will do this by clicking the +students button, then you will either select that you would like them to sign in with google or without google.

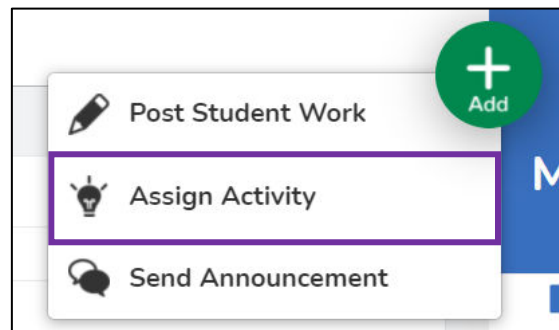
On the student's initial log in, they will need to type in a class code. They only need to do this the FIRST time. Every time after that, they will just click "Student Sign in with Google."

The code expires every 7 days, so if you get students part way through the year, the code will not be the same for them when logging in.



Now you are ready to create your first activity! Seesaw has a library of pre-made activities that can be searched by content and grade level. You can also create your own activity from scratch, or upload something from your computer files or Google Drive. You will start by clicking the green circle with the +.

The Community (red square) has a bank of premade activities.





Seesaw Lesson (green square) has an entire collection of lesson activities. They are sorted by topic. For example, you can find a collection of lessons for STEAM.

My Library (blue square) is where you will create your own activities.

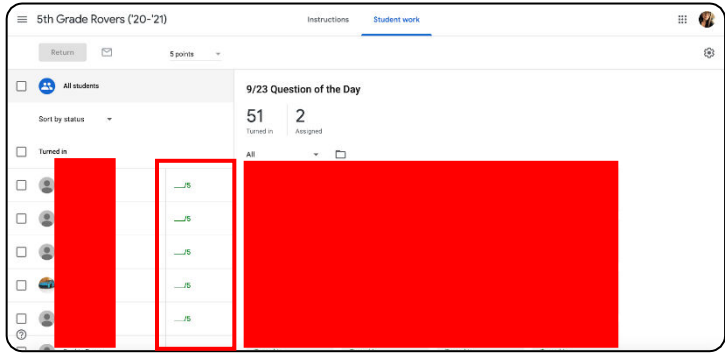
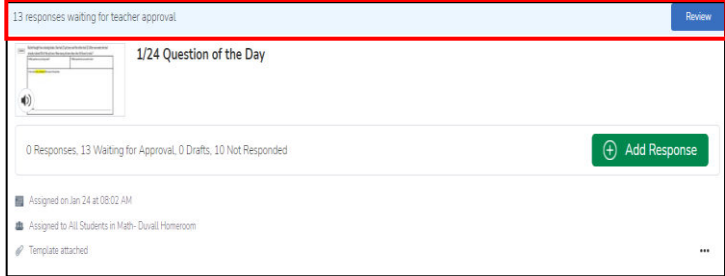
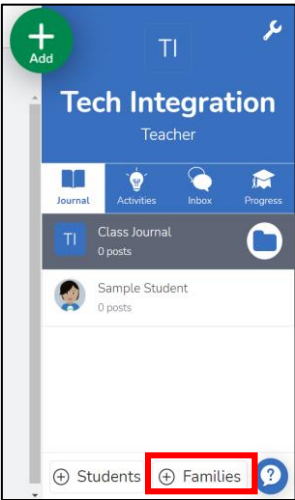
Please check out this [video](#) for more information on the types of assignments you can create!

Once you've created your first activity, you are ready to add the link to Google Classroom! If you do not use Google Classroom, students can log into Seesaw, and they will see their assigned activities in the activities tab with the lightbulb icon.

Assigning to Google Classroom:

- *Each activity you create gets its own link.
- *This link can be assigned in Google Classroom as an assignment.
- *Once students complete the activity, they click "Mark as Done" in the Google Classroom.
- *This allows you to give it a grade within Google Classroom.
- *You can select which students you want to complete each activity, making differentiation feasible with this tool.



| | |
|---|---|
| |  |
| <p>As students complete an activity, the teacher will need to approve the post before it can be seen by other students and families. This also goes for any comments made on a post! Everything must be approved before it can be seen by the students and families.</p> <p>You will click review, then you can individually approve each post, or approve all at once.</p> |  |
| <p>Connecting families is a great way for families to see what their child is doing in school. The process is very easy! You will click +Families in the bottom right corner. You can send email directions or print the flyer. Each flyer will have the child's name with a personalized QR code that links to their account. Families will just scan the QR code to create an account that will connect with their child.</p> |  |



Now you are ready to try Seesaw in your classroom! Feel free to check out the resource videos below if you would like more specific directions for certain topics!

[Seesaw Startup](#)

[General Seesaw Tips](#)

[Adding Co-Teachers to Seesaw](#)

[Adding Families to Seesaw](#)

[Creating an Activity](#)

[Assigning Activities to Google Classroom](#)

Are you interested in checking out more of our eTips? Check out this link for more!

[**S3 eTips**](#)